

PRICE LIST



APEX[®]

SINCE 1959

An ISO 9001-2015 Company

WORK HOLDING EQUIPMENTS



PRICE LIST NO. 718
w.e.f. 1st AUGUST 2024

Subject to change without prior notice



Size in mm	Price Each Rs.	Std. Pkg.
------------	----------------	-----------

APEX CODE 701 Tilting & Swiveling Vice		
100	13626/-	1
150	23850/-	1
200	43365/-	1

SG 701 S.G. Iron Body		
100	15873/-	1
150	26640/-	1
200	48072/-	1

Now in Dovetailed Slide



Size in mm	Price Each Rs.	Std. Pkg.
------------	----------------	-----------

APEX CODE 703 P Milling Machine Vice (Plain Model)		
75	6213/-	2
100	10701/-	2
125	14568/-	1
150	16665/-	1
160	19335/-	1
200	32094/-	1
250	54054/-	1
300	76017/-	1

SG 703 P S.G. Iron Body (Plain Model)		
75	7668/-	2
100	12951/-	2
125	16755/-	1
150	18954/-	1
160	22236/-	1
200	36417/-	1
250	55872/-	1
300	78570/-	1



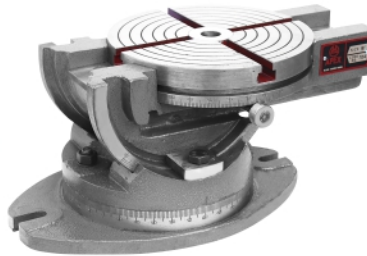
APEX CODE SG 701 A Universal Machine Vice S.G. Iron Body		
100	20481/-	2
150	28923/-	1



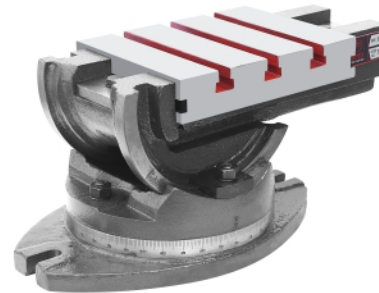
APEX CODE 702 Shaper Vice Swivel Model (With Serrated Jaws)		
150	15555/-	1
200	32580/-	1
250	48687/-	1
300	66894/-	1



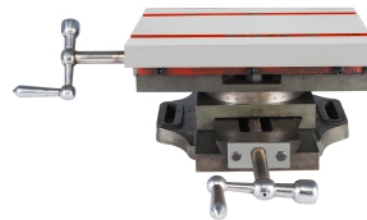
APEX CODE 702 P Shaper Vice Plain Model (With Serrated Jaws)		
150	12057/-	1
200	23967/-	1
250	35658/-	1
300	48009/-	1



APEX CODE 704 Compound Angle Table (Round Table)		
225	26712/-	1



APEX CODE 704 R Compound Angle Table (Rectangular Table)		
225x175	27423/-	1



APEX CODE 705 D Compound Sliding Table (With Swivel Graduated Base)		
300x200	19785/-	1

Now in Dovetailed Slide



APEX CODE 703 Milling Machine Vice (Swivel Model)		
75	8004/-	2
100	12732/-	2
125	16317/-	1
150	22038/-	1
160	26319/-	1
200	41667/-	1
250	70383/-	1
300	95721/-	1

SG 703 S.G. Iron Body		
75	8778/-	2
100	15417/-	2
125	18765/-	1
150	25269/-	1
160	30264/-	1
200	47808/-	1
250	72450/-	1
300	98940/-	1



APEX CODE 706 Compound Sliding Table (With Swivel Graduated Base)		
150x150	9057/-	2
200x200	10179/-	1



Size in mm	Price Each Rs.	Std. Pkg.
150x150	5121/-	3
200x200	5595/-	3

APEX CODE 706 S
Single Sliding Table
(With 3/8" cross slots)



Size in mm	Price Each Rs.	Std. Pkg.
300x200	22569/-	1

APEX CODE 707
Compound Sliding Table
(With calibrated wheels & swivel graduated base)



Size in mm	Price Each Rs.	Std. Pkg.
300 x 300	25251/-	1
300 x 500	53049/-	1
400 x 400	61401/-	1

APEX CODE 707A
Compound Sliding Table (with calibrated wheels & swivel graduated base)



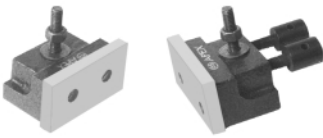
Size in mm	Price Each Rs.	Std. Pkg.
300 x 300	25251/-	1
300 x 500	53049/-	1
400 x 400	61401/-	1

APEX CODE 707T
Compound Sliding Table (with calibrated wheels & swivel graduated base)



Size in mm	Price Each Rs.	Std. Pkg.
150 x 150	10020/-	2
200 x 200	11037/-	1
250 x 250	18696/-	1

APEX CODE 708
Compound Sliding Table (with calibrated wheels & swivel graduated base)




Size in mm	Price Each Rs.	Std. Pkg.
150 x 150	1377/-	4
200 x 200	1251/-	4
300 x 200	1377/-	4
300 x 300	1377/-	4
400 x 400	3762/-	4
300 x 500	3762/-	4

APEX CODE 708J
Jaws for Compound Sliding Tables (PAIR)




Size in mm	Price Each Rs.	Std. Pkg.
150 x 150	6306/-	3
200 x 200	7020/-	3

APEX CODE 708S
Single Sliding Table
(With calibrated wheels)



Size in mm	Price Each Rs.	Std. Pkg.
100	12834/-	1
125	20490/-	1
150	26901/-	1
200	55023/-	1

APEX CODE 709
Standard Machine Vice




Size in mm	Price Each Rs.	Std. Pkg.
80	1707/-	6
100	2847/-	4
125	4017/-	3
150	5694/-	2

APEX CODE 710
Unigrip Machine Vice
(Cast Iron Frame)

SG 710
S.G. Iron Body

Size in mm	Price Each Rs.	Std. Pkg.
80	1986/-	6
100	3150/-	4
125	4458/-	3
150	6297/-	2



S.G. Iron


Size in mm	Price Each Rs.	Std. Pkg.
175 x 250	16497/-	1

APEX CODE 711
Vertical Sliding Table
(With calibrated wheels & Swivel calibrated base)



Size in mm	Price Each Rs.	Std. Pkg.
100	5556/-	3
150	12714/-	2
200	25035/-	1

APEX CODE 712
Drill Vice
(Deluxe Model)




Size in mm	Price Each Rs.	Std. Pkg.
75	2289/-	6
100	3321/-	4
125	4731/-	4
150	7140/-	4
200	12060/-	2

APEX CODE 713
Drill Machine Vice

SG 713
S.G. Iron Body

Size in mm	Price Each Rs.	Std. Pkg.
75	2472/-	6
100	3648/-	4
125	5226/-	4
150	8109/-	4
200	13515/-	2
250	23658/-	1
300	29067/-	1



Size in mm	Price Each Rs.	Std. Pkg.
75	2199/-	6
100	2904/-	4
125	3924/-	4
150	4773/-	4
200	8958/-	2

APEX CODE 713 E
Drill Machine Vice (Economy Model)
Unbreakable S.G. Iron Body



APEX CODE SG 714
Machinist Bench Vice (Fixed Base)
Unbreakable S.G. Iron Body

Size in mm	Price Each Rs.	Std. Pkg.
75	1755/-	6
100	3492/-	4
115	4020/-	2
125	5253/-	2
150	6300/-	2
200	9522/-	1
250	15930/-	1
300	19722/-	1
400	27168/-	1



APEX CODE SG 714S
Machinist Bench Vice (Swivel Base)
Unbreakable S.G. Iron Body

Size	Price	Std.
75	2316/-	6
100	4236/-	4
125	6540/-	2
150	7686/-	2
200	11946/-	1
250	17043/-	1
300	20745/-	1



APEX CODE 715
Rotary milling Table (Plain Model)

Size	Price	Std.
150	11394/-	2
200	14505/-	1
250	19821/-	1
300	30357/-	1
375	52317/-	1
450	89058/-	1
500	97650/-	1



APEX CODE 715E
Universal Rotary milling Table
(Horizontal & Vertical)

Size	Price	Std.
100	7476/-	2
150	11976/-	2
200	17190/-	1
250	23388/-	1
300	36537/-	1
375	54603/-	1
450	95958/-	1
500	104013/-	1



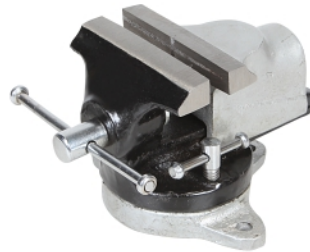
APEX CODE 715H
Indexing Device
(For Code 715 & 715E)

Size	Price	Std.
Small H-1		
150	5340/-	4
200	5340/-	4
250	5340/-	4
Large H-2		
300	7575/-	4
375	7575/-	4
450	7575/-	4
500	7575/-	4



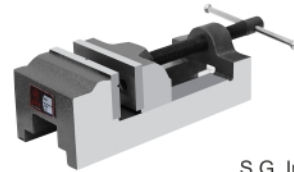
APEX CODE 716
Table Vice (Fixed base)

Size	Price	Std.
30	333/-	12
40	405/-	12
50	423/-	12
60	591/-	8
75	858/-	8



APEX CODE 716S
Table Vice
Swivel Base

Size	Price	Std.
30	435/-	12
40	474/-	12
50	552/-	12
60	837/-	8
75	1155/-	8



S.G. Iron

APEX CODE 717
Empire Machine Vice

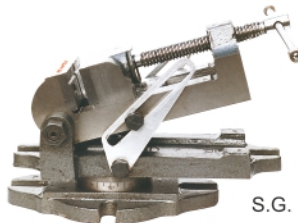
Size	Price	Std.
40	651/-	8
60	1872/-	6
75	3162/-	6
100	5091/-	4



S.G. Iron

APEX CODE 717A
Empire Angle Machine Vice

Size	Price	Std.
60	3174/-	6
75	4788/-	4



S.G. Iron

APEX CODE 717 AS
Empire Angle Machine Vice
(With graduated Swivel Base)

Size	Price	Std.
60	4023/-	4
75	5799/-	4



APEX CODE 718
Table vice

Size	Price	Std.
25	252/-	20
40	258/-	20
50	285/-	20
60	339/-	10
75	405/-	10
100	501/-	06



APEX CODE 719
Preci Self Centering Vice
(Swivel Base)
Unbreakable S.G. Iron Body

Size	Price	Std.
100	9717/-	1
150	18573/-	1



APEX CODE 719P
Preci Self Centering Vice
(Plain Model)
Unbreakable S.G. Iron Body

Size	Price	Std.
100	8034/-	1
150	14076/-	1



Size in mm	Price Each Rs.	Std. Pkg.
------------	----------------	-----------

APEX CODE SG 720
Precision Machine Vice (Swivel Base)
S.G. Iron Body

100	9213/-	2
150	17010/-	1



APEX CODE 721
Universal Compound Vice
Unbreakable S.G. Iron Body

100	11001/-	1
125	13923/-	1

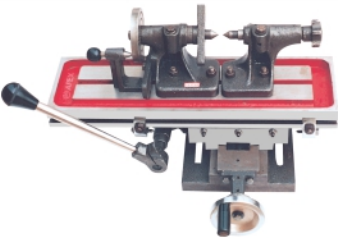
S.G. Iron



APEX CODE 722
Profiling Milling & Slotting Slide

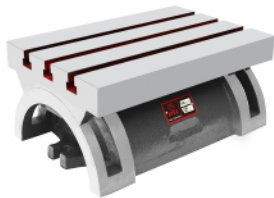
450 x 125	23454/-	1
-----------	---------	---

S.G. Iron



APEX CODE 722D
Profiling Milling & Slotting Slide
with Indexing Dividing Head
and Tail Stock

450 x 125	28413/-	1
-----------	---------	---



APEX CODE 723
Tilting Table
(Graduated)

125 x 175	10782/-	2
175 x 250	17211/-	1
250 x 375	35727/-	1



APEX CODE 723S
Tilting Table
(With Swivel Base)

125 x 175	16854/-	2
175 x 250	24279/-	1
250 x 375	57054/-	1



APEX CODE 724
Self Centering Shaft Vice

10 to 80	23643/-	1
50 to 150	52923/-	1



APEX CODE SG 725
Drill Press Vice (German Type)
S.G. Iron Body

75	1932/-	6
100	2631/-	4
125	3486/-	4
150	4356/-	2
200	7005/-	2



APEX CODE 726
Hand Vice Steel

75	144/-	20
100	189/-	20
125	240/-	20
150	288/-	20
200	525/-	10



APEX CODE 727
Draw Vice Steel

150	1155/-	10
200	1644/-	10
250	2544/-	6
300	3066/-	6



APEX CODE 728
Pipe Vice (Open Type)

3-30	1989/-	6
5-50	3150/-	4
5-75	5514/-	3
5-100	7089/-	2
50-150	17325/-	1
50-200	36225/-	1

SG 728
S.G. Iron Body

5-50	2883/-	4
5-75	4887/-	3
5-100	6696/-	2
50-150	14658/-	1



APEX CODE 728S
Fabricated Steel Pipe Vice (Open Type)

50	3048/-	4
75	4320/-	4
100	7710/-	3

New



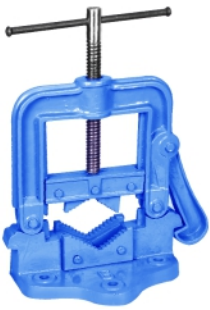
APEX CODE 729
Chain Pipe Vice

50	831/-	6
75	1188/-	6
100	1587/-	4
150	3066/-	3
200	4290/-	2



APEX CODE 730
3 Way Universal Tilt &
Swivel Angle Vice

100	19761/-	1
150	41373/-	1



Size in mm	Price Each Rs.	Std. Pkg.
------------	----------------	-----------

APEX CODE 731
Hinged Pipe Vice
SG Iron Body

40	1284/-	8
50	1626/-	8
60	2256/-	4
85	3417/-	3
115	4665/-	2
150	10089/-	2



S.G. Iron

APEX CODE 732
Compound Sliding Table
(With Calibrated Wheel)

300 x 150	11805/-	1
-----------	---------	---



APEX CODE 733
Table Vice with Clamp
(Deluxe Model)

30	321/-	20
40	414/-	20
50	429/-	20
60	594/-	20
75	885/-	10



APEX CODE 733S
Table Vice with Clamp
(Swivel Base) (Deluxe Model)

30	456/-	20
40	483/-	20
50	567/-	20
60	852/-	10
75	1224/-	10



APEX CODE SG 734
Cross Rib Bench Vice (Fixed Base)
S.G. Iron Body

75	1797/-	8
100	3036/-	4
125	4593/-	4
150	7311/-	2
200	11316/-	1



APEX CODE SG 734S
Cross Rib Bench Vice (Swivel Base)
S.G. Iron Body

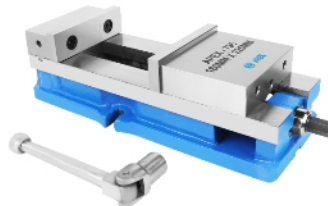
75	2547/-	6
100	4017/-	4
125	6063/-	3
150	9750/-	2
200	15315/-	1



Size in mm	Price Each Rs.	Std. Pkg.
------------	----------------	-----------

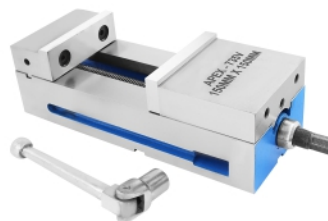
APEX CODE 735
Tilt Lock Machine Vice
Swivel Model (S.G. Iron Body)

Jaw Width in mm	Opening in mm	Price	Std. Pkg.
100	150	18279/-	1
125	150	21390/-	1
150	175	27402/-	1
160	225	29634/-	1
200	250	49704/-	1
200	300	51081/-	1
310	400	83010/-	1



APEX CODE 735P
Tilt Lock Machine Vice
Plain Model (S.G. Iron Body)

Jaw Width in mm	Opening in mm	Price	Std. Pkg.
100	150	15426/-	1
125	150	15678/-	1
150	175	20541/-	1
160	225	22740/-	1
200	250	39177/-	1
200	300	40434/-	1
310	400	79335/-	1



APEX CODE 735 V
Precision Tilt Lock Machine Vice

150mm	23700/-
-------	---------



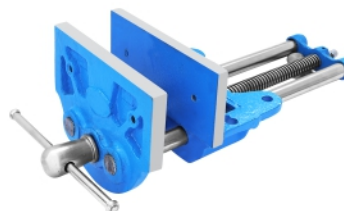
APEX CODE 735 SCV
Self Centering Tilt Lock Machine Vice

150	24732/-
-----	---------



APEX CODE SG 736
Machine Clamps (Pair)
Unbreakable S.G. Iron Body

60	4263/-	2
75	7329/-	2
100	19833/-	1



APEX CODE 737
Wood Working Vice

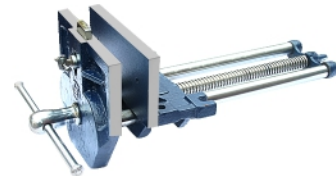
150	2280/-	6
175	3537/-	4
200	4581/-	3
225	6702/-	3



Size in mm	Price Each Rs.	Std. Pkg.
------------	----------------	-----------

APEX CODE 737QR
Quick Release Wood Working Vice

150	2841/-	6
175	4098/-	4
200	5295/-	3
225	7455/-	3



APEX CODE 738
Wood Worker's Vice (with front dog)

175	4284/-	4
200	5022/-	3
225	7602/-	3



APEX CODE 738QR
Quick Release Wood Worker's Vice (with front dog)

175	4635/-	4
200	5424/-	3
225	8100/-	3



APEX CODE 739
Quick Action Bench Vice (Double Rib)
Unbreakable S.G. Iron Body

100	8412/-	3
115	9411/-	3
125	12078/-	2
150	14325/-	2



APEX CODE 740
Heavy Duty Bench Vice Deluxe (Double Rib)
Unbreakable S.G. Iron Body

80	2730/-	4
90	4002/-	4
100	5802/-	3
115	7293/-	3
125	8502/-	2
150	11283/-	2
200	16260/-	1



APEX CODE 740S
Heavy Duty Bench Vice Deluxe (Double Rib) Swivel Base
Unbreakable S.G. Iron Body

80	4056/-	4
90	5061/-	4
100	7605/-	3
115	8781/-	3
125	10731/-	2
150	13920/-	2
200	21570/-	1



Size in mm	Price Each Rs.	Std. Pkg.
------------	----------------	-----------

APEX CODE 741
Mechanic's Bench Vice (Fixed Base)
Unbreakable S.G. Iron Body

60	1284/-	6
65	1524/-	6
80	2076/-	6
90	2943/-	4
100	5172/-	4
115	5532/-	4
125	6894/-	2
150	8625/-	2
200	13809/-	1
250	25812/-	1
300	29127/-	1



APEX CODE 741S
Mechanic's Bench Vice (Swivel Base)
Unbreakable S.G. Iron Body

65	2295/-	6
80	3240/-	6
90	4263/-	4
100	7020/-	3
115	7413/-	3
125	9447/-	2
150	11706/-	2
200	18747/-	1



APEX CODE 742F
Permanent Magnetic Chuck Fine Pole (Rectangular)

100 x 150	8871/-	2
100 x 200	9978/-	2
125 x 250	14532/-	2
150 x 250	16008/-	2
150 x 300	18747/-	1
150 x 350	20622/-	1
150 x 400	22683/-	1
150 x 450	28011/-	1
150 x 600	45981/-	1
200 x 300	22500/-	1
200 x 350	24756/-	1
200 x 400	29865/-	1
200 x 450	39477/-	1
200 x 500	47496/-	1
200 x 600	62814/-	1
250 x 600	78804/-	1
300 x 600	97797/-	1
250 x 750	127818/-	1
300 x 750	148824/-	1



APEX CODE 742T
Permanent Magnetic Chuck Through Pole (Rectangular)

100 x 150	12087/-	2
100 x 200	13182/-	2
125 x 250	18129/-	1
150 x 300	24174/-	1
150 x 350	27204/-	1
200 x 350	29523/-	1
150 x 400	29934/-	1
200 x 400	33384/-	1
150 x 450	35250/-	1
200 x 450	49113/-	1
200 x 500	57267/-	1
250 x 500	74520/-	1



Size in mm	Price Each Rs.	Std. Pkg.
------------	----------------	-----------

APEX CODE 743F
Permanent Magnetic Chuck
Fine Pole (Circular)

150	13536/-	1
200	17700/-	1
225	19941/-	1
250	22506/-	1
300	29343/-	1
350	50358/-	1
400	77718/-	1
450	93216/-	1



APEX CODE 744
Engineer's Vice
Unbreakable S.G. Iron Body

100	5364/-	3
125	9009/-	2
150	17457/-	2



APEX CODE 745
Milling Machine Vice
Deluxe (Swivel Model)

100	15648/-	2
150	26949/-	1
200	45864/-	1



APEX CODE 745P
Milling Machine Vice
Deluxe (Plain Model)

100	10431/-	2
150	19491/-	1
200	34398/-	1



APEX CODE 746
Machinist Bench Vice
(As Per IS 2586-1986)

	Bronze Nut	FG Nut	
50	1653/-	1419/-	6
60	2379/-	2049/-	6
75	3609/-	3084/-	4
100	6870/-	5961/-	3
125	9174/-	7974/-	2
150	11439/-	9963/-	1



Size in mm	Price Each Rs.	Std. Pkg.
------------	----------------	-----------

APEX CODE 747
Pipe Vice
(Square Pillar)

35	969/-	8
50	1281/-	6
75	2112/-	4
100	2862/-	3
150	6192/-	2



APEX CODE 747R
Pipe Vice
(Round Pillar)

35	1725/-	8
50	2199/-	6
75	3564/-	4
100	6564/-	2



APEX CODE 748
Preci Milling Machine Vice
(Swivel Model)

100	14757/-	2
150	27927/-	1
200	52182/-	1

SG 748
S.G. Iron Body

100	16278/-	2
150	35088/-	1
200	65457/-	1



APEX CODE 748P
Preci Milling Machine Vice
(Plain Model)

100	12390/-	2
150	20616/-	1
200	39420/-	1

SG 748P
S.G. Iron Body

100	13641/-	2
150	22026/-	1
200	41982/-	1



APEX CODE 749
Preci Tilting &
Swivelling Vice

100	17814/-	1
150	29418/-	1


SG 749
S.G. Iron Body

100	19530/-	1
150	32964/-	1



APEX CODE 750
Swivel Angle Table

125 x 150	6153/-	2
150 x 200	7692/-	2
200 x 250	15372/-	1
250 x 300	28032/-	1
300 x 375	46767/-	1



Size in mm	Price Each Rs.	Std. Pkg.
APEX CODE 751 Plain Angle Plates Machined		
50x50x50	573/-	6
75x75x75	903/-	6
100x100x100	1656/-	6
125x125x125	2763/-	4
150x150x150	4422/-	3
200x200x200	9393/-	2
250x250x250	16029/-	1
300x300x300	25956/-	1
APEX CODE 752 Plain Angle Plates Precision Ground		
50x50x50	705/-	6
75x75x75	1080/-	6
100x100x100	1821/-	6
125x125x125	3033/-	4
150x150x150	4851/-	3
200x200x200	10311/-	2
250x250x250	17586/-	1
300x300x300	28482/-	1



Size in mm	Price Each Rs.	Std. Pkg.
APEX CODE 753 Slotted Angle Plates Machined (Webbed End)		
90x75x65	1239/-	6
115x90x75	1383/-	6
150x125x115	2583/-	6
175x140x115	3795/-	4
200x150x125	4392/-	4
225x175x150	7131/-	3
250x200x150	8259/-	2
300x225x200	14406/-	1



Size in mm	Price Each Rs.	Std. Pkg.
APEX CODE 753G Slotted Angle Plates Precision Ground (Webbed End)		
90x75x65	1491/-	6
115x90x75	1755/-	6
150x125x115	3156/-	6
175x140x115	4617/-	4
200x150x125	5166/-	4
225x175x150	8178/-	3
250x200x150	9750/-	2
300x225x200	16200/-	1



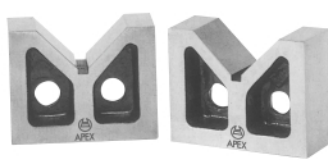
Size in mm	Price Each Rs.	Std. Pkg.
APEX CODE 754 Slotted Angle Plates Machined (Open End)		
115x90x75	1383/-	6
150x125x115	2586/-	6
175x140x115	4365/-	4
200x150x125	4392/-	4
225x175x150	7131/-	3
250x200x150	8670/-	2
300x225x200	17388/-	1



Size in mm	Price Each Rs.	Std. Pkg.
APEX CODE 754G Slotted Angle Plates Precision Ground (Open End)		
115x90x75	1755/-	6
150x125x115	3156/-	6
175x140x115	4617/-	4
200x150x125	5166/-	4
225x175x150	8175/-	3
250x200x150	9750/-	2
300x225x200	18714/-	1




Size in mm	Price Each Rs.	Std. Pkg.
APEX CODE 755 Giant Slotted Angle Plates Machined		
400x300x225	20214/-	1
500x400x300	39774/-	1
600x600x450	104979/-	1




Size in mm	Price Each Rs.	Std. Pkg.
APEX CODE 756 C.I. Vee Blocks Machined (PAIR) Without Clamp		
50x32x47	987/-	6
75x60x65	1890/-	6
100x65x80	3000/-	6
125x80x100	4734/-	6
150x88x125	8310/-	3
175x113x150	12327/-	2
200x138x200	18894/-	1
250x163x250	29295/-	1
300x200x300	35910/-	1



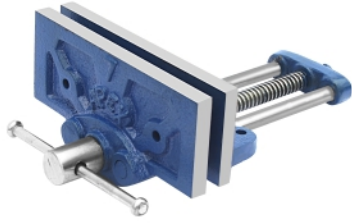
Size in mm	Price Each Rs.	Std. Pkg.
APEX CODE 756G C.I. Vee Blocks Precision Ground (PAIR) With One Clamp		
50x38x38	1548/-	6
75x38x38	1932/-	6
75x50x50	2217/-	6
100x38x75	2778/-	6
100x63x63	4122/-	4
100x75x75	4176/-	4
125x44x88	4878/-	4
150x50x100	5469/-	3
150x100x100	10611/-	3



Size in mm	Price Each Rs.	Std. Pkg.
APEX CODE 757 Tool Maker's Bench Vice (Fixed Base)		
75	2607/-	6
90	3597/-	4
100	6618/-	3
125	8721/-	2
150	11493/-	2
200	17442/-	1



Size in mm	Price Each Rs.	Std. Pkg.
APEX CODE 757S Tool Maker's Bench Vice (Swivel Base)		
90	4809/-	4
100	8541/-	3
125	11727/-	2
150	15081/-	2
200	22227/-	1



Size in mm	Price Each Rs.	Std. Pkg.
APEX CODE 758 Economy Wood Worker's Vice		
150	1140/-	10
175	1515/-	8
200	2478/-	8
225	3258/-	4
250	3762/-	4
300	4143/-	3



APEX CODE 759
All Steel Bench Vice
(Fixed Base)

Size in mm	Price Each Rs.	Std. Pkg.
75	2274/-	6
100	3414/-	3
125	5256/-	2
150	6465/-	2
200	11148/-	2



APEX CODE 759S
All Steel Bench Vice
(Swivel Base)

Size in mm	Price Each Rs.	Std. Pkg.
75	2859/-	6
100	4044/-	4
125	5985/-	3
150	8184/-	2
200	13116/-	2



APEX CODE SG 760
Heavy Duty Drill Vice
S.G. Iron Body

Size in mm	Price Each Rs.	Std. Pkg.
75	2427/-	4
100	4365/-	3
150	8733/-	2



APEX CODE 761
Low Height Milling Machine Vice
Fixed Base (Open Screw)
Unbreakable S.G. Iron Body

Size in mm	Price Each Rs.	Std. Pkg.
100	5784/-	2



APEX CODE 762
Super Opening Adjustable
2-Piece Milling Vice
Unbreakable S.G. Iron Body

Size in mm	Price Each Rs.	Std. Pkg.
150	11313/-	2



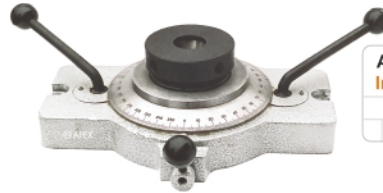
APEX CODE 764
Dial Comparator Stand
(Supplied without dial gauge)

Size in mm	Price Each Rs.	Std. Pkg.
3 75	9663/-	1
8 60	4734/-	1
5 45	9297/-	1



APEX CODE 765
Tilting Indexing Device
(With 3 Jaws Chuck Mounting)

Size in mm	Price Each Rs.	Std. Pkg.
100	41556/-	1
200	78609/-	1



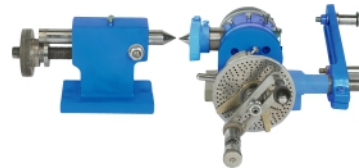
APEX CODE 766
Indexing Collet Fixture

Size in mm	Price Each Rs.	Std. Pkg.
A-25	18018/-	1
A-42	18222/-	1



APEX CODE 767
Indexing Milling Fixture

Size in mm	Price Each Rs.	Std. Pkg.
100	32829/-	1
150	32973/-	1



APEX CODE 768
Universal Dividing Head
Centre Height

Centre Height	Price Each Rs.	Std. Pkg.
115	34506/-	1
127	46680/-	1
140	49509/-	1
165	58344/-	1
190	67095/-	1



APEX CODE 769
Magnetic V-Blocks Soft (Pair)

Size in mm	Price Each Rs.	Std. Pkg.
65x60x50	8433/-	2
80x65x60	10272/-	2
100x95x75	14148/-	2
150x95x75	22011/-	1
200x150x100	65913/-	1



APEX CODE 769H
Magnetic V-Blocks Hardened (Pair)

Size in mm	Price Each Rs.	Std. Pkg.
80x65x60	15258/-	2
100x95x75	22407/-	2
150x95x75	33705/-	1
200x150x100	94080/-	1

Size in mm	Price Each Rs.	Std. Pkg.
		
APEX CODE SG 770 Collet Fixture (For Traub A-25, A-42 & Herbert-2D Collets)		
A-25	5139/-	2
A-42	5859/-	2
H-2D	5859/-	2

Size in mm	Price Each Rs.	Std. Pkg.
		
APEX CODE 771 All Steel Precision Grinding Vice (Carbon Steel Body)		
75	14748/-	2
100	21519/-	2
150	51681/-	1
APEX CODE 771T All Steel Precision Grinding Vice (Tool Steel Body)		
75	20115/-	2
100	28941/-	2
150	65280/-	1

Size in mm	Price Each Rs.	Std. Pkg.
		
APEX CODE 772 Tools Maker's Precision Screw Less Vice (Carbon Steel Body)		
75	8820/-	2
100	16467/-	2
150	42108/-	1
APEX CODE 772T Tools Maker's Precision Screw Less Vice (Iron Steel Body)		
75	17388/-	2
100	27456/-	2
150	58755/-	1

Size in mm	Price Each Rs.	Std. Pkg.
		
APEX CODE 773 Extra Grips Machine Vice Swivel Model		
100	13998/-	1
150	26478/-	1
SG 773 S.G. Iron Body		
100	15447/-	1
150	28011/-	1

Size in mm	Price Each Rs.	Std. Pkg.
		
APEX CODE 773P Extra Grips Machine Vice Plain Model		
100	12234/-	1
150	22614/-	1
SG 773P S.G. Iron Body		
100	12984/-	1
150	24828/-	1

Size in mm	Price Each Rs.	Std. Pkg.
		
APEX CODE 774 Hi Grip Machine Vice Swivel Model		
100	17724/-	1
150	30873/-	1
SG 774 S.G. Iron Body		
100	19404/-	1
150	31893/-	1

Size in mm	Price Each Rs.	Std. Pkg.
		
APEX CODE 774P Hi Grip Machine Vice Plain Model		
100	13650/-	1
150	24012/-	1
SG 774P S.G. Iron Body		
100	14325/-	1
150	26196/-	1

Size in mm	Price Each Rs.	Std. Pkg.
		
APEX CODE 775 Precision Drill Press Vice		
100	4968/-	2
150	10314/-	1
SG 775 S.G. Iron Body		
100	6552/-	2
150	12147/-	1

Size in mm	Price Each Rs.	Std. Pkg.
		
APEX CODE 777 Stepped Angle Plates		
75x75x75	8631/-	4
100x100x100	15510/-	4

Size in mm	Price Each Rs.	Std. Pkg.
		
APEX CODE 778 4 Way Vee Block Cast Iron (PAIR)		
35x95x70	3897/-	
30x100x100	4437/-	
35x120x120	6792/-	
60x120x120	10584/-	
75x150x150	14001/-	
100x200x200	30519/-	



Size in mm	Price Each Rs.	Std. Pkg.
------------	----------------	-----------

APEX CODE 779
Tool Maker's Vee Block & Clamping Sets-Precision (PAIR)

40	3366/-	3
45	4206/-	3
50	4263/-	3
60	5844/-	3
70	6081/-	3
75	8199/-	3
80	14346/-	2
100	15222/-	2



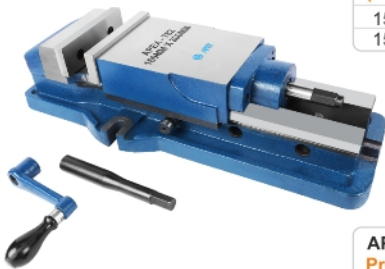
APEX CODE 780
Ultimate Vee Block & Clamping Set

90	6270/-	4
----	--------	---



APEX CODE 781
Micrometer Stand

3090/-	10
--------	----



APEX CODE 782
Precision Hydraulic Machine Vice (Swivel Base)

150 x 200	44286/-	1
150 x 300	47040/-	1

APEX CODE 782P
Precision Hydraulic Machine Vice (Plain Base)

150 x 200	40347/-	1
150 x 300	43101/-	1



APEX CODE 783
Indexing Milling Fixture - Horizontal & Vertical

80/100/125 mm with Chuck & with Tail Stock	49260/-
80/100/125 mm with Chuck & without Tail Stock	37638/-
160mm with Chuck & with Tail Stock	65331/-
160mm with Chuck & without Tail Stock	49209/-
200 mm with Chuck & with Tail Stock	71286/-
200 mm with Chuck & without Tail Stock	54951/-



To Suit T-Slot	Price Each Rs.	Std. Pkg.
----------------	----------------	-----------

APEX CODE SG 787
Multipurpose Vice S.G. Iron Body

100	4725/-	1
125	6525/-	
150	9900/-	



APEX CODE 788
Heavy Duty Precision Machine Swivel Model (S.G. Ductile Iron)

150	32610/-	1
-----	---------	---



APEX CODE 788P
Heavy Duty Precision Machine Plain Model (S.G. Ductile Iron)

150	27648/-	1
-----	---------	---



APEX CODE 789
Clamp Vice (For Hand Pump) M.S. Steel Body

50	4338/-	4
75	4899/-	4



APEX CODE 790
Precision Self Centering High Grip Shaft Vice

150	64650/-	1
-----	---------	---

Size in mm	Price Each Rs.	Std. Pkg.
------------	----------------	-----------



New

APEX CODE 791 Precision Self Centering High Grip Machine Vice		
150	62937/-	1

To Suit T-Slot	Price Each Rs.	Std. Pkg.
----------------	----------------	-----------



New

APEX CODE 796 Precision 5-Axis Machine Vice Accuracy 0.02 MM Hardness 60 ± 2 HRC		
80	53067/-	1
125	60261/-	1



New

APEX CODE 792 Precision High Grip Machine Vice		
150	56133/-	1



New

APEX CODE 797 Multi Grip Machine Vice With Serrated Slide Ways Accuracy 0.02 MM Hardness 60 ± 2 HRC		
70	78957/-	1

900 Series Clamps & Clamping Elements



New

APEX CODE 793 High Precision Modular Vice Accuracy 0.02 MM Hardness 57-62 HRC		
100 x 165	37329/-	1
150 x 225	45180/-	1
150 x 300	51351/-	1



APEX CODE 901 Lever Clamp		
12-20	2445/-	4



New

APEX CODE 794 High Precision Modular Vice With Parallel Top Jaws Accuracy 0.02 MM Hardness 57-62 HRC		
125 x 175	33528/-	1
150 x 225	39336/-	1
150 x 300	45993/-	1



APEX CODE 902 Flat Clamp			
902-8	8	741/-	10
902-10	10	777/-	10
902-12	12	966/-	10
902-14	14	966/-	10
902-16	16	1299/-	10
902-18	18	1299/-	10
902-20	20	2166/-	6
902-22	22	2379/-	6



New

APEX CODE 795 High Precision Two Piece Modular Vice Accuracy 0.02 MM Hardness 57-62 HRC		
150	58590/-	1



APEX CODE 903 Taper Clamp			
903-8	8	753/-	10
903-10	10	795/-	10
903-12	12	1140/-	10
903-14	14	1140/-	10
903-16	16	1572/-	10
903-18	18	1572/-	10
903-20	20	2229/-	6
903-22	22	2454/-	6



		To Suit T-Slot	Price Each Rs.	Std. Pkg.
APEX CODE 904				
Slot Clamp				
904-12	12		717/-	20
904-14	14		831/-	20
904-16	16		999/-	20
904-18	18		1140/-	10



		To Suit T-Slot	Price Each Rs.	Std. Pkg.
APEX CODE 905				
Stepless Height Adjustable Clamp				
Clamp Height				
905-1212	50		1014/-	10
905-1414	50		1065/-	10
905-1616	65		1287/-	10
905A-1616	75		1683/-	10
905-1816	65		1614/-	10
905A-1816	75		2058/-	10
905-2020	85		2289/-	6
905-2220	95		2616/-	6



		To Suit T-Slot	Price Each Rs.	Std. Pkg.
APEX CODE 906				
Down Thrust Clamp				
906-105	14 to 18		4254/-	4
906-135	14 to 18		5571/-	4
APEX CODE 906E				
Separate Cylinder				
906E-35			681/-	4
906E-75			1008/-	4



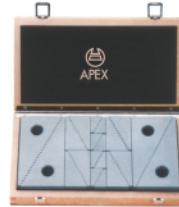
		To Suit T-Slot	Price Each Rs.	Std. Pkg.
APEX CODE 907				
Low Height Clamp				
	12 to 18		2331/-	4



		To Suit T-Slot	Price Each Rs.	Std. Pkg.
APEX CODE 908				
Low Down Thrust Clamp				
	12 to 16		2079/-	4



		To Suit T-Slot	Price Each Rs.	Std. Pkg.
APEX CODE 909				
Step Block Universal (PAIR)				
Height Max				
909-1	53		489/-	10
909-2	105		783/-	10
909-3	208		1746/-	10



		To Suit T-Slot	Price Each Rs.	Std. Pkg.
APEX CODE 909S				
Step Block Set				
909S-16 Pcs.			7281/-	4
909-1	909-2		909-3	
(4 Pairs)	(2Pairs)		(2Pairs)	



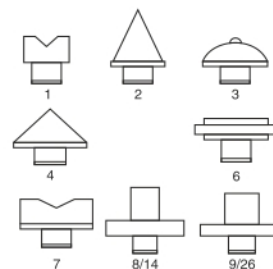
		To Suit T-Slot	Price Each Rs.	Std. Pkg.
APEX CODE 910				
Height Plates Adjustable				
Plate Total Thickness Height				
910-225	2	25	294/-	20
910-250	2	50	510/-	20
910-275	2	75	756/-	20
910-2100	2	100	966/-	20
910-2125	2	125	1557/-	10
910-2150	2	150	1710/-	10
910-425	4	25	447/-	10
910-450	4	50	669/-	10
910-475	4	75	921/-	10
910-4100	4	100	1596/-	10
910-4125	4	125	1764/-	10
910-4150	4	150	2061/-	10
910-4200	4	200	2709/-	10



		To Suit T-Slot	Price Each Rs.	Std. Pkg.
APEX CODE 911				
Screw Jack with Steel Body				
(Having Flat Support)				
Range KN				
911-1	40-50	12	819/-	10
911-2	50-70	60	996/-	10
911-3	70-100	60	1467/-	10
911-4	100-140	100	2094/-	4
911-5	140-210	165	4212/-	2
911-6	190-300	350	6744/-	2



		To Suit T-Slot	Price Each Rs.	Std. Pkg.
APEX CODE DS 911				
Screw Jack with double Side Flange				
DS 911-1	200-320	40	3327/-	2
DS 911-2	320-550	25	4338/-	2



		To Suit T-Slot	Price Each Rs.	Std. Pkg.
APEX CODE P 911				
Pads for Screw Jacks				
P 911-1			186/-	10
P 911-2			186/-	10
P 911-3			252/-	10
P 911-4			258/-	10
P 911-6			285/-	10
P 911-7			372/-	10
P 911-8/14			372/-	10
P 911-9/26			567/-	10

Size in mm	Price Each Rs.	Std. Pkg.
---------------	-------------------	--------------



APEX CODE SF 911
Screw Jack with
Single Side Flange
(with Ring Type Lock Nut)
(S.G. Iron Housing
Carbon Steel Spindle)

SF 911-1	100-140	60	2025/-	4
SF 911-2	140-200	60	2553/-	2

To Suit T-Slot	Price Each Rs.	Std. Pkg.
-------------------	-------------------	--------------



APEX CODE 913P
Self Aligning Pad
(with Plain Ball)

913P-1	8	8	435/-	10
913P-2	10	10	630/-	10
913P-3	12	12	804/-	10
913P-4	16	16	1095/-	10
913P-5	20	20	2598/-	5



APEX CODE HD 911
Heavy Duty Screw Jack
(With Brass Locking Screw)

HD 911-1	200-300	80	6954/-	2
HD 911-2	280-460	60	9528/-	2
HD 911-3	430-750	50	12198/-	1
HD 911-4	320-450	80	13701/-	1
HD 911-5	410-720	60	14937/-	1

APEX CODE 914T
Strap Clamp
(As Per IS 4294:1984)
(Adjustable Clamp with Thread
for Adjusting Screw)
(Only Clamp Price)
(In Accordance with the DIN 6314)

914T-1	9x60	M8	162/-	10
914T-2	11x80	M10	297/-	10
914T-3	14x100	M12	417/-	10
914T-4	14x125	M12	504/-	10
914T-5	18x125	M16	573/-	10
914T-6	18x160	M16	654/-	10
914T-7	22x160	M20	1086/-	4
914T-8	22x200	M20	1206/-	4
914T-11	26x200	M24	1728/-	4
914T-12	26x250	M24	2079/-	4



APEX CODE 912
Steel Parallels
(As per IS 4241 : 1990)
(PAIR)

912-1	5x10x100	1224/-	3
912-2	10x20x125	1719/-	3
912-3	15x30x150	2625/-	3
912-4	20x40x200	4554/-	3
912-5	25x50x250	8427/-	2
912-6	30x60x300	14664/-	1
912-7	40x80x350	28839/-	1
912-8	50x100x400	51882/-	1

APEX CODE 915
Stepped Strap Clamp

915-1	11x80	M10	333/-	10
915-2	14x100	M12	444/-	10
915-3	14x125	M12	534/-	10
915-4	18x125	M16	606/-	10
915-5	18x160	M16	696/-	10
915-6	22x160	M20	1128/-	4
915-7	22x200	M20	1248/-	4
915-8	26x200	M24	1779/-	4



APEX CODE 913
Self Aligning Pad
(with Ribbed Ball)

913-1	8	8	624/-	10
913-2	10	10	783/-	10
913-3	12	12	840/-	10
913-4	16	16	1125/-	10
913-5	20	20	2808/-	5

APEX CODE 916
Open-End Strap Clamp
(As per Is 4293-1984)
(In accordance with the
DIN 6315-B Standard)

916-1	11x100	M10	354/-	10
916-2	14x125	M12	456/-	10
916-3	14x160	M12	543/-	10
916-4	14x200	M12	654/-	10
916-5	18x160	M16	780/-	10
916-6	18x200	M16	924/-	10
916-7	18x250	M16	1206/-	10
916-8	22x200	M20	1821/-	4
916-9	22x250	M20	2166/-	4
916-10	22x315	M20	2793/-	4
916-11	26x200	M24	1860/-	4
916-12	26x250	M24	2223/-	4
916-13	26x315	M24	2814/-	4



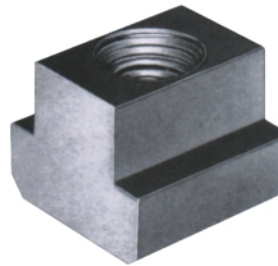
Size in mm	Price Each Rs.	Std. Pkg.
---------------	-------------------	--------------



APEX CODE 917
Goose Neck Clamp

917-1	11x100	M10	606/-	10
917-2	14x125	M12	636/-	10
917-3	18x160	M16	1104/-	10
917-4	22x200	M20	2016/-	4
917-5	26x250	M24	3774/-	4

To Suit T-Slot	Price Each Rs.	Std. Pkg.
-------------------	-------------------	--------------



APEX CODE 923
T-Slot Nut (As Per IS 2015-1977)
(In accordance with DIN 508 Standard)

923-0	8xM6	30/-	50
923-1	10xM8	42/-	50
923-2	12xM10	48/-	50
923-2A	14xM10	60/-	50
923-3	14xM12	60/-	50
923-3A	16xM12	87/-	50
923-3B	18xM12	96/-	50
923-4	18xM14	96/-	50
923-5	18xM16	96/-	50
923-5A	20xM16	114/-	50
923-5B	22xM16	165/-	30
923-7	22xM20	165/-	20
923-7A	28xM20	288/-	10
923-9	28xM24	288/-	10



APEX CODE 920
Hex Nut

920-1	M8	19/-	50
920-2	M10	22/-	50
920-3	M12	30/-	50
920-4	M16	48/-	50
920-5	M20	84/-	30
920-6	M24	132/-	20
920-7	M30	249/-	10



APEX CODE 925
Plain Washer
(In accordance with DIN 6340 Standard)

925-1	M8	24/-	50
925-2	M10	27/-	50
925-3	M12	45/-	50
925-4	M16	63/-	50
925-5	M20	78/-	50
925-6	M24	114/-	30
925-7	M30	213/-	20



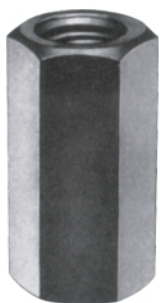
APEX CODE 921
Flanged Nut (As Per IS : 7795-1975)

921-1	M8	30/-	50
921-2	M10	42/-	50
921-3	M12	54/-	50
921-3A	M14	72/-	50
921-4	M16	87/-	50
921-5	M20	135/-	30
921-6	M24	162/-	30
921-7	M30	349/-	30



APEX CODE 926
Spherical Washer with Conical Seat
(In accordance with DIN 6319 Type C
DIN 6319 Type D Standard)

926-1	M8	36/-	50
926-2	M10	42/-	50
926-3	M12	57/-	50
926-4	M16	81/-	50
926-5	M20	126/-	30
926-6	M24	186/-	30
926-7	M30	324/-	10



APEX CODE 922
Coupling Nut

922-1	M10	33/-	50
922-2	M12	45/-	50
922-3	M16	90/-	50
922-4	M20	159/-	50
922-5	M24	267/-	30
922-6	M30	519/-	10



APEX CODE 928
C-Washer (As Per IS : 4291-1996)
(In accordance with DIN 6372)

928-1	M8	54/-	50
928-2	M10	66/-	50
928-3	M12	90/-	50
928-4	M16	150/-	50
928-5	M20	219/-	30
928-6	M24	312/-	30
928-7	M30	474/-	10

Size in mm	Price Each Rs.	Std. Pkg.
---------------	-------------------	--------------

APEX CODE 929
T-Bolts (As Per IS 2014:1977)

929-5	10MMxM10	40	59/-	30
929-5A		50	60/-	30
929-6		65	63/-	30
929-7		80	66/-	30
929-8		100	81/-	20
929-9	12MMxM12	50	75/-	50
929-10		65	81/-	50
929-11		80	84/-	50
929-12		100	96/-	50
929-13		125	105/-	50
929-14		160	120/-	50
929-15		200	135/-	30
929-15A		250	165/-	20
929-16	14MMxM12	50	81/-	50
929-17		65	96/-	50
929-18		80	102/-	50
929-19		100	111/-	50
929-20		125	117/-	50
929-21		160	129/-	50
929-22		200	153/-	30
929-23		250	183/-	10
929-23A		320	237/-	10
929-24	16MMxM16	65	114/-	50
929-25		80	123/-	50
929-26		100	135/-	50
929-27		125	153/-	50
929-28		160	162/-	30
929-29		200	213/-	30
929-30		250	279/-	10
929-30A		320	297/-	30
929-31	18MMxM16	65	123/-	50
929-32		80	141/-	50
929-33		100	150/-	50
929-34		125	156/-	50
929-35		160	168/-	20
929-36		200	213/-	20
929-37		250	279/-	10
929-37A		320	336/-	20
929-38	20MMxM20	80	165/-	20
929-39		100	180/-	20
929-40		125	225/-	20
929-41		160	246/-	10
929-42		200	258/-	10
929-43		250	336/-	10
929-43A		320	420/-	10
929-44	22MMxM20	80	216/-	20
929-45		100	231/-	20
929-46		125	249/-	20
929-47		160	297/-	10
929-48		200	312/-	6
929-49		250	369/-	6
929-50		320	477/-	6
929-51	24MMxM24	100	339/-	6
929-52		125	366/-	6
929-53		160	378/-	6
929-54		200	426/-	6
929-55		250	540/-	6
929-56		320	546/-	6
929-57		400	651/-	6
929-58	24MMxM28	100	384/-	6
929-59		125	429/-	6
929-60		160	525/-	6
929-61		200	648/-	6
929-62		250	855/-	6
929-63		320	888/-	6
929-64		400	1044/-	6



To Suit T-Slot	Price Each Rs.	Std. Pkg.
-------------------	-------------------	--------------

APEX CODE 930
Clamping Studs
(As Per IS 13178:1991)

930-0	M8	32	21/-	20
930-1		40	24/-	20
930-2		50	27/-	20
930-3		63	30/-	20
930-4		80	33/-	20
930-5		100	36/-	20
930-6	M10	50	27/-	20
930-7		63	30/-	20
930-8		80	33/-	30
930-9		100	36/-	30
930-10		125	48/-	20
930-10A		160	60/-	20
930-10B		200	75/-	10
930-11	M12	50	30/-	50
930-12		63	33/-	30
930-13		80	36/-	30
930-14		100	45/-	30
930-15		125	60/-	30
930-16		160	75/-	30
930-17		200	96/-	30
930-17A		250	105/-	20
930-17B		315	168/-	10
930-18	M16	63	45/-	30
930-19		80	54/-	30
930-20		100	81/-	30
930-21		125	93/-	30
930-22		160	114/-	30
930-23		200	153/-	30
930-24		250	189/-	20
930-24A		315	231/-	10
930-25	M20	80	84/-	10
930-26		100	138/-	10
930-27		125	183/-	10
930-28		160	198/-	10
930-29		200	219/-	10
930-30		250	279/-	10
930-31		315	339/-	10
930-32		400	405/-	10
930-32A		450	441/-	10
930-33		500	525/-	10
930-34	M24	100	135/-	10
930-35		125	183/-	10
930-36		160	213/-	10
930-37		200	276/-	10
930-38		250	333/-	10
930-39		315	450/-	10
930-40		400	543/-	10
930-40A		450	630/-	10
930-41		500	684/-	10



APEX CODE 930S
Clamping Stud with Slot
Having Tapped Holes.
(Hardened & Tempered)

930S-1	M12	100	75/-	20
930S-2		125	90/-	20
930S-3		150	96/-	20
930S-4		175	105/-	20
930S-5	M16	125	120/-	20
930S-6		150	135/-	20
930S-7		175	162/-	20
930S-8		200	171/-	20
930S-8A	M20	125	162/-	10
930S-9		150	183/-	10
930S-10		175	213/-	10
930S-11		200	231/-	10
930S-11A	M24	150	234/-	10
930S-12		175	279/-	10
930S-13		200	312/-	10
930S-14		225	333/-	10





Size in mm	Price Each Rs.	Std. Pkg.
------------	----------------	-----------

APEX CODE 931
Clamping Kit - 34 Pcs.
(With Adjustable Plates & Strap Clamps) in Elegant Metallic Steel Box

931-1	14-12 M	5892/-	2
931-2	16-12 M	5955/-	2
931-3	18-12 M	6021/-	2
931-4	18-16 M	7356/-	2



APEX CODE 932
Clamping Kit - 58 Pcs.
(With Step Blocks & Stepped Strap Clamps) in Elegant Metallic Steel Rack

932-1	14-12 M	9876/-	2
932-2	16-12 M	9969/-	2
932-3	18-12 M	10086/-	2
932-4	18-16 M	13578/-	2



APEX CODE 933
Universal Strap Clamp
(with T-Bolt & Special Nut)

933-1	1212x100	792/-	10
933-2	1412x100	801/-	10
933-3	1616x100	1053/-	10
933-4	1816x100	1059/-	10
933-5	2020x160	1554/-	4
933-6	2220x160	1572/-	4
933-7	2424x250	2271/-	4
933-8	2824x250	2292/-	4



APEX CODE 934
Mould Clamp
(with Stud & Flange Nut)

934-1	12x100	789/-	10
934-2	16x125	1065/-	10
934-3	20x175	1575/-	4
934-4	24x200	2199/-	4
with T-bolt & Flanged Nut			
934-5	1212x100	831/-	10
934-6	1412x100	837/-	10
934-7	1616x160	1116/-	10
934-8	1816x160	1116/-	10
934-9	2020x160	1677/-	4
934-10	2220x160	1695/-	4
934-11	2424x250	2622/-	4
934-12	2824x250	2622/-	4



APEX CODE 935
Open End Mould Clamp
(Clamp Price only)

935-1	M-12	624/-	10
935-2	M-16	927/-	10
935-3	M-20	1758/-	4
935-4	M-24	2187/-	4

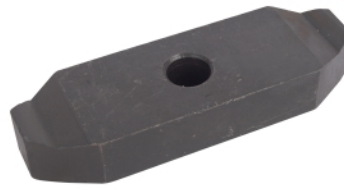
APEX CODE 935 B
Bolt only for above

935B-1	M-12	96/-	10
935B-2	M-16	138/-	10
935B-3	M-20	231/-	10
935B-4	M-24	303/-	10



APEX CODE 936
Slotted Clamp (As Per IS:6082-1985)
D x L Suitable for Screw Sizes

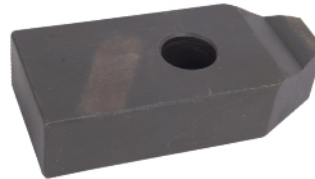
936-1	11x75	M10	294/-	10
936-2	11x95	M10	315/-	10
936-3	14x100	M12	417/-	10
936-4	14x115	M12	462/-	10
936-5	18x120	M16	528/-	10
936-6	18x135	M16	561/-	10
936-7	22x140	M20	927/-	4
936-8	22x150	M20	966/-	4
936-9	26x200	M24	1554/-	4
936-10	26x240	M24	1812/-	4



To Suit T-Slot	Price Each Rs.	Std. Pkg.
----------------	----------------	-----------

APEX CODE 937
Double Ended Clamp
(As per IS:6080-1985)

937-1	11x60	M10	189/-	10
937-2	11x85	M10	231/-	10
937-3	14x100	M12	321/-	10
937-4	14x125	M12	384/-	10
937-5	18x125	M16	426/-	10
937-6	18x150	M16	492/-	10
937-7	22x150	M20	789/-	4
937-8	22x200	M20	987/-	4



APEX CODE 938
Plain Clamp
(As Per IS:6081-1971)

938-1	11x70	M10	252/-
938-2	14x80	M12	270/-
938-3	18x100	M16	390/-
938-4	22x120	M20	654/-
938-5	26x150	M24	999/-



APEX CODE 939
Table Clamp
(As Per IS:5251-1984)

939-1	11x23	M10	198/-
939-2	11x30	M10	228/-
939-3	14x26	M12	270/-
939-4	14x33	M12	327/-
939-5	18x35	M16	450/-
939-6	18x40	M16	459/-
939-7	22x40	M20	588/-
939-8	22x45	M20	726/-



APEX CODE 501
Bearing Puller 3 Legs Universal
Drop Forged Steel

75	333/-	10
100	444/-	10
150	654/-	10
200	882/-	10
250	1284/-	6
300	1536/-	6



APEX CODE 501A
Bearing Puller 2 Legs Universal
Drop Forged Steel

75	327/-	10
100	432/-	10
150	636/-	10
200	861/-	10
250	1263/-	6
300	1518/-	6



Size in mm	Price Each Rs.	Std. Pkg.
------------	----------------	-----------

APEX CODE 501 PC
Bearing Puller D/F 3 Legs (Double Hole Powder Coated)

75	357/-	20
100	477/-	20
150	708/-	20
200	945/-	10



APEX CODE 501 H
Bearing Puller Hand Forged Steel 3 Legs

14"	1860/-	6
16"	2130/-	6
18"	2391/-	6
20"	2949/-	6
22"	3237/-	4
24"	3531/-	4



APEX CODE 501 AH
Bearing Puller Hand Forged Steel 2 Legs

14"	1821/-	6
16"	2079/-	6
18"	2334/-	6
20"	2880/-	6
22"	3168/-	4
24"	3456/-	4



APEX CODE 502
G Clamps Malleable

50	150/-	60
75	213/-	40
100	279/-	40
125	351/-	20
150	435/-	20
200	585/-	20
250	1047/-	10
300	1257/-	10



APEX CODE 503
Drop Forged G. Clamps

50	294/-	50
75	444/-	40
100	612/-	40
150	939/-	40
200	1413/-	10
250	2562/-	6
300	3162/-	4



APEX CODE 504
Adj. Tap Wrench (Auto Black Drop Forged Carbon Steel Hardened & Tempered)

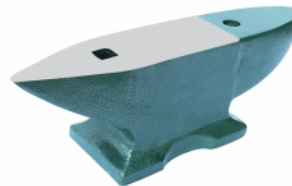
6.5	258/-	50
10	306/-	50
13	333/-	50
20	462/-	20
25	687/-	10
31	756/-	10
40	1371/-	10
50	2373/-	10



Size in mm	Price Each Rs.	Std. Pkg.
------------	----------------	-----------

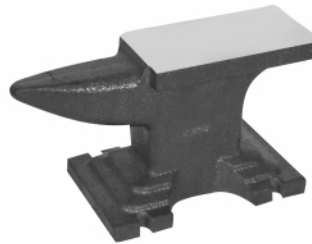
APEX CODE 505
Armature Bearing Puller Vice

75	2385/-	4
----	--------	---



APEX CODE 506
Anvil

1 kgs	312/-
2 kgs	630/-
5 kgs	1449/-
10 kgs	2904/-
15 kgs	4350/-
20 kgs	5802/-
25 kgs	7257/-
30 kgs	8709/-
40 kgs	10806/-
50 kgs	13398/-
60 kgs	16074/-
70 kgs	18756/-
75 kgs	20091/-
100 kgs	26790/-



APEX CODE 507
Drill Sleeves (Workshop Grade)

M.T. No.	Price	Std. Pkg.
0-1	102/-	100
2-1	111/-	100
3-2	147/-	50
4-3	270/-	50
5-4	663/-	30
6-5	1914/-	30
3-1	171/-	100
4-1	309/-	100
4-2	309/-	100
5-1	741/-	50
5-2	741/-	50
5-3	741/-	50
6-2	2190/-	30
6-3	2190/-	30
6-4	2190/-	30



APEX CODE 508
Drill Chuck with Key

1/2"	792/-	30
------	-------	----



APEX[®]

SINCE 1959

An ISO 9001-2015 Company

Terms & Conditions

- All prices are exclusive GST. GST will be charged extra.
 - Prices are F.O.R. Jalandhar.
 - Order will be accepted for supply in standard carton packaging as mentioned in list.
 - Subject to Jalandhar Jurisdiction only.
-

Authorised Dealer

APEX INDUSTRIES
JALANDHAR 144 008 (INDIA)

visit us at : www.apexmachinevices.com

Follow us  @apexvices